



# Inventory Barcode (I/B) Manufacturing

## For Sage 300 (formerly ACCPAC)

### The Solution

For manufacturing companies, inventory transaction occurs in every business area. Starting from customer orders to purchase orders to manufacturing orders, each order consists of multiple stock in/out records. A simple and reliable inventory system is needed to automate all these transactions.

AutoSimply's Inventory Barcode (I/B) Manufacturing module is an easy to use plug-in barcode system for small to medium-sized manufacturing companies to handle all the inventory movement transaction accurately and efficiently.

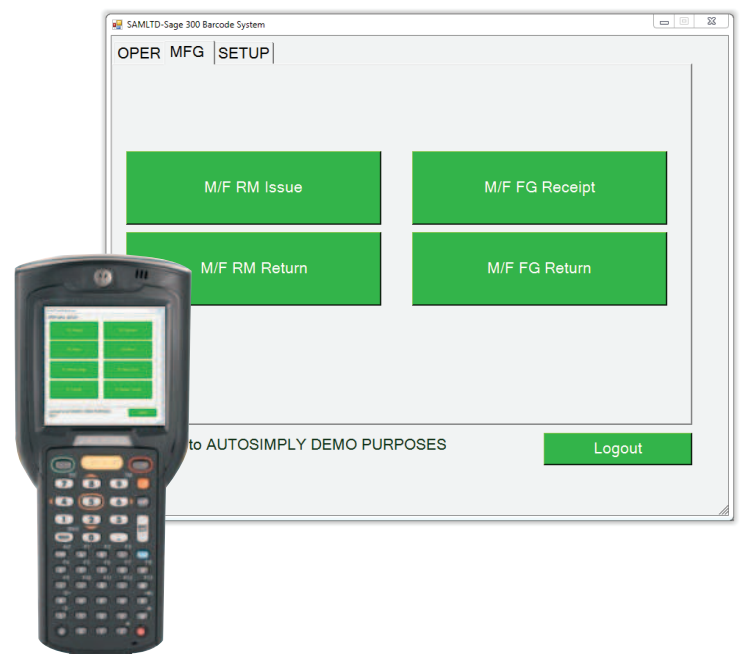
### How it works

Inventory Barcode (I/B) is developed with 100% Sage 300 SDK and uses the latest Web Service Technology. All transactions are posted real-time via the Sage 300 application server.

Barcode Manufacturing makes full use of M/F and I/C data. Designed to be a single system, I/B uses the same I/C and M/F tables and views. No separate data synchronization is needed and therefore prevents any inventory balance discrepancy within the system.

In using Microsoft Internet Web Service (IIS) as gateway, this allows IB to support warehouse to shop floor and backoffice real-time update with no geographical limitation.

With I/B, all manufacturing material issuances, returns and finished goods receipts can now be recorded by the use of handheld scanners or tablets and immediately posted to the backend Sage 300 database.



### Function Highlight

#### • MO Raw Material Issue

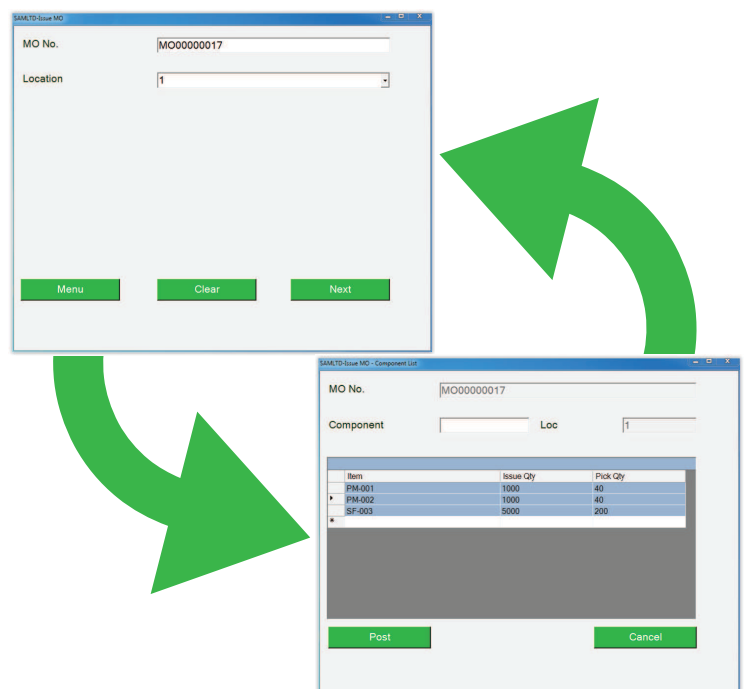
Once a Manufacturing Order (MO) has been released, raw materials are issued out of warehouses to the production floor. Users need only scan the MO number and verify items to be issued by scanning each item line and entering the actual quantity to be issued.

#### • MO Raw Material Return

In case of excess raw materials issued or even user error, raw materials are sometimes returned to the warehouse from the production floor. Users need only scan the MO number, scan the item number to be returned and input the actual quantity to return.

#### • MO Finished Goods Receipt

Upon completion of the production process, Finished Good items are received into the warehouse. Both full or partial receipts are supported. Users need only to scan the MO number and enter the quantity be received.



### • MO Finished Goods Return

In case of user error or rework, the receipt of Finished Good items can be easily reversed by posting a MO FG Return entry. Users need only scan the MO number and enter the quantity to be returned to the production floor.

### • Supports Lot/Serialized Items

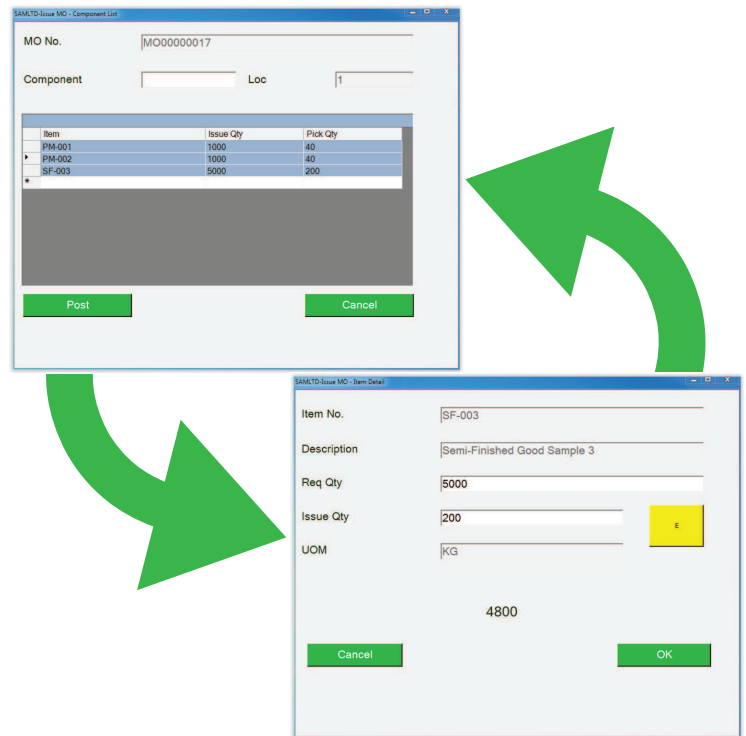
Fully integrated with Sage 300, AutoSimply I/B supports lot/serialized item tracking. This requires both the I/C Lot/Serial module and AutoSimply's Manufacturing Lot (M/L) module.

### • Supports Bin Tracking

Locations in I/C can be divided into bins for a more detailed inventory management. AutoSimply I/B is fully integrated with Orchid's Bin Tracking module. User need only to scan the appropriate bin numbers during MO transactions.

### • Barcode User and Security

Barcode users can be created in I/B with specific security rights. Each function in the I/B interface can be assigned to each user.



## Main Benefits

- ▶ **ROI \$** : Inventory Barcode (I/B) generates real savings in terms of time and costs for every warehouse transaction that the backoffice and warehouse needs to process. The more transactions processed, the more savings generated.
- ▶ **Time Saver** : By implementing I/B, duplicate processes between the backoffice and the warehouse are eliminated. Scanning of barcodes also enhances the speed of transaction processing across the entire warehouse.
- ▶ **Accurate Inventory** : With I/B, all inventory in/out movements are recorded by scanning the physical barcode. Correct item transactions are recorded against the matching documents. All transactions are posted real-time all the time.
- ▶ **Better Communication** : The use of I/B streamlines communication between backoffices and warehouses. Information is relayed electronically instead of telefaxes and computer printouts.
- ▶ **Customer Satisfaction** : With the use of barcodes, I/B minimizes the chance of incorrect inventory receipts, shipments and transfers. Scanning of barcodes also greatly enhances the speed of order processing leading to on-time deliveries.
- ▶ **Light, Plug-In Solution** : After setting up the Web Service environment, users just need to install I/B on their chosen hardware and immediately start using it.

### Summary of Main Features:

- M/F Raw Material Issuance
- M/F Raw Material Return
- M/F Finished Goods Receipt
- M/F Finished Goods Return
- Supports Serialized/Lot-Tracked Items \*
- Supports Location Bin Tracking \*\*

\* Requires Autosimply Manufacturing Lot (M/L) Module  
\*\* Require Orchid Bin Tracking Module

### Requirement Checklist

- Sage 300 I/C, O/E, P/O 6.1 or later
- Autosimply Manufacturing (M/F) Module
- Requires one (1) Sage 300 Lanpak for Connection
- For Barcode Scanners - Windows CE 6.0 or Windows Mobile 6.0 or later; at least 2.8" touch screen; supported display resolutions: VGA, QVGA, WVGA, WQVGA
- For Tablets – Full Windows OS
- WIFI connection to the Sage 300 Application Server
- Barcode printers for label printing



Authorized Partner

### AutoSimply Company Limited

© 2015 AutoSimply Company Ltd. All rights reserved. AutoSimply Software, AutoSimply Software logos, and all AutoSimply product and service names are registered trademarks of AutoSimply Company Ltd., or its affiliated entities. All other trademarks are the property of their respective owners. Sage 300 ERP is registered trademarks of Sage Software, Inc.